

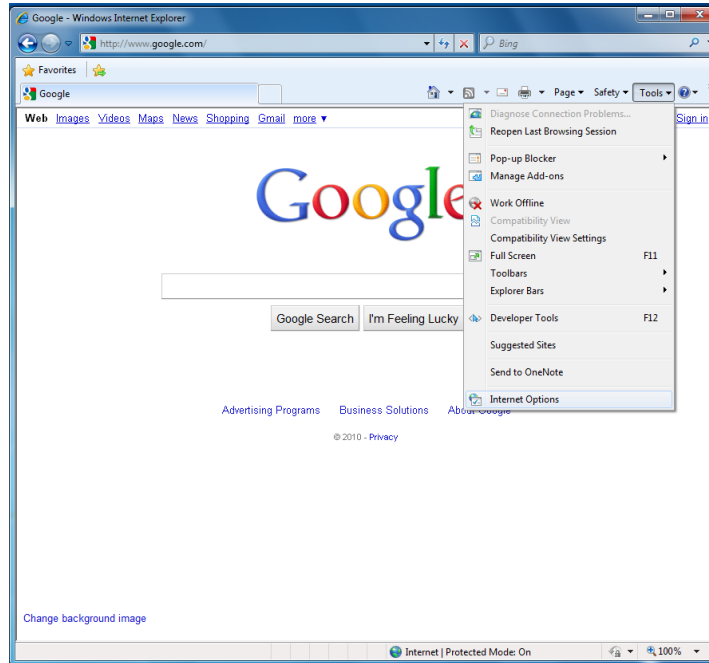
Instructions :: Accessing a Vonnic DVR through the local network or remotely via Internet Explorer

Step 1. Configure Internet Explorer

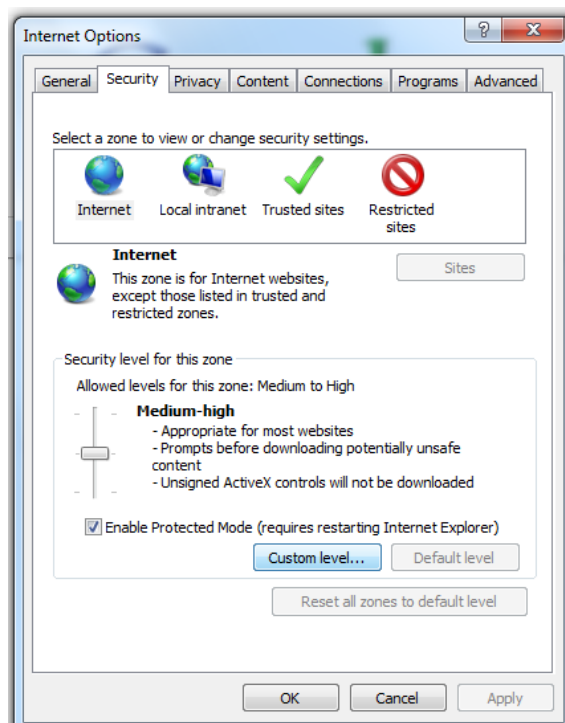
Vonnic DVRs use ActiveX controls to run web interface, ActiveX must be enabled.

To enable ActiveX Controls:

Open Internet Explorer – Click on the tools tab – Internet Options



Click security tab – Internet button – Custom Level button



Scroll down list to locate the ActiveX Controls and Plug-ins

Set options as listed below:

Allow previously used ActiveX controls to run without prompt

- **Enable**

Allow Scriptlets

- **Prompt**

Automatic prompting for ActiveX controls

- **Enable**

Binary and script behaviors

- **Enable**

Display video and animation on a webpage that does not use external media player

- **Enable**

Download signed ActiveX controls

- **Prompt**

Download unsigned ActiveX controls

- **Prompt**

Initialize and script ActiveX controls not marked as safe for scripting

- **Prompt**

Only allow approved domains to use ActiveX without prompt

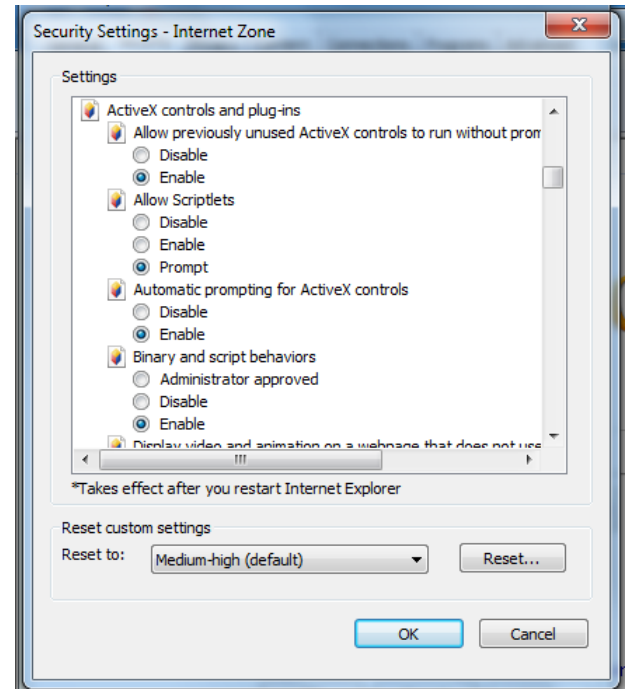
- **Enable**

Run ActiveX controls and plug-ins

- **Enable**

Script ActiveX controls marked safe for scripting

- **Enable**



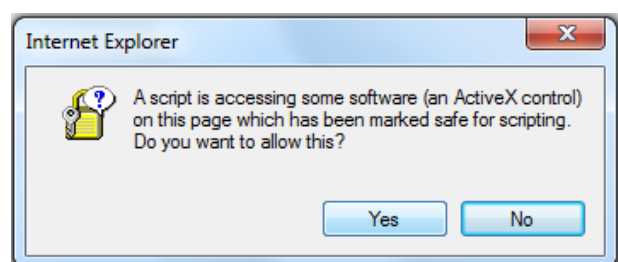
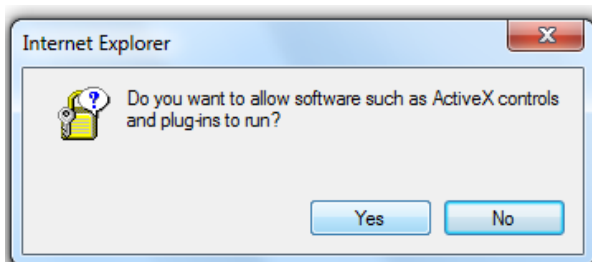
Click OK on Security Settings – Internet Zone window

Click OK on Internet Options window

Close all Internet Explorer Windows, and reopen

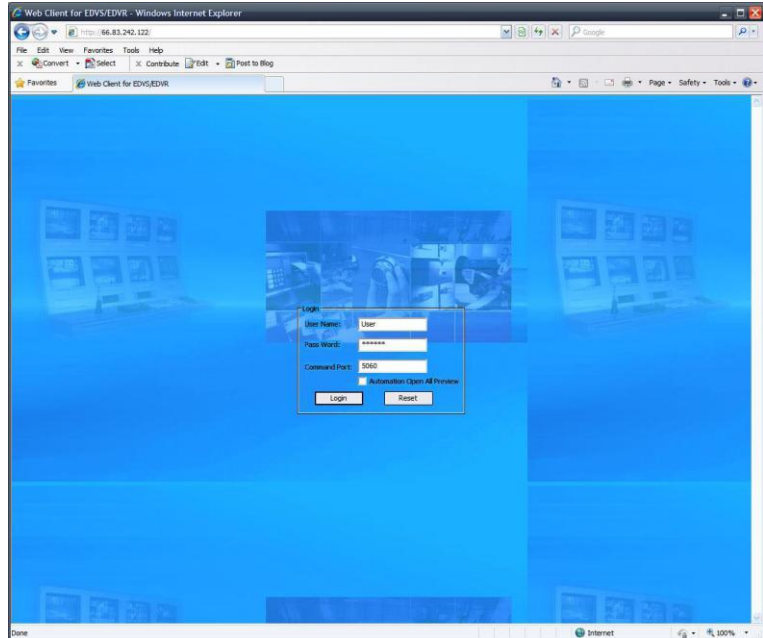
Step 2. Launch Internet Explorer – In address bar enter local or remote IP address for DVR press enter.

You will be prompted to allow ActiveX plug-ins and scripts to run, answer yes to all



If IP address and network settings are correct, the DVR's login page should appear.

Default User Name: Admin
Default Password: 888888
Command Port: 5050



Once logged in to DVR, click the Open All button in the lower left corner to display all channels

